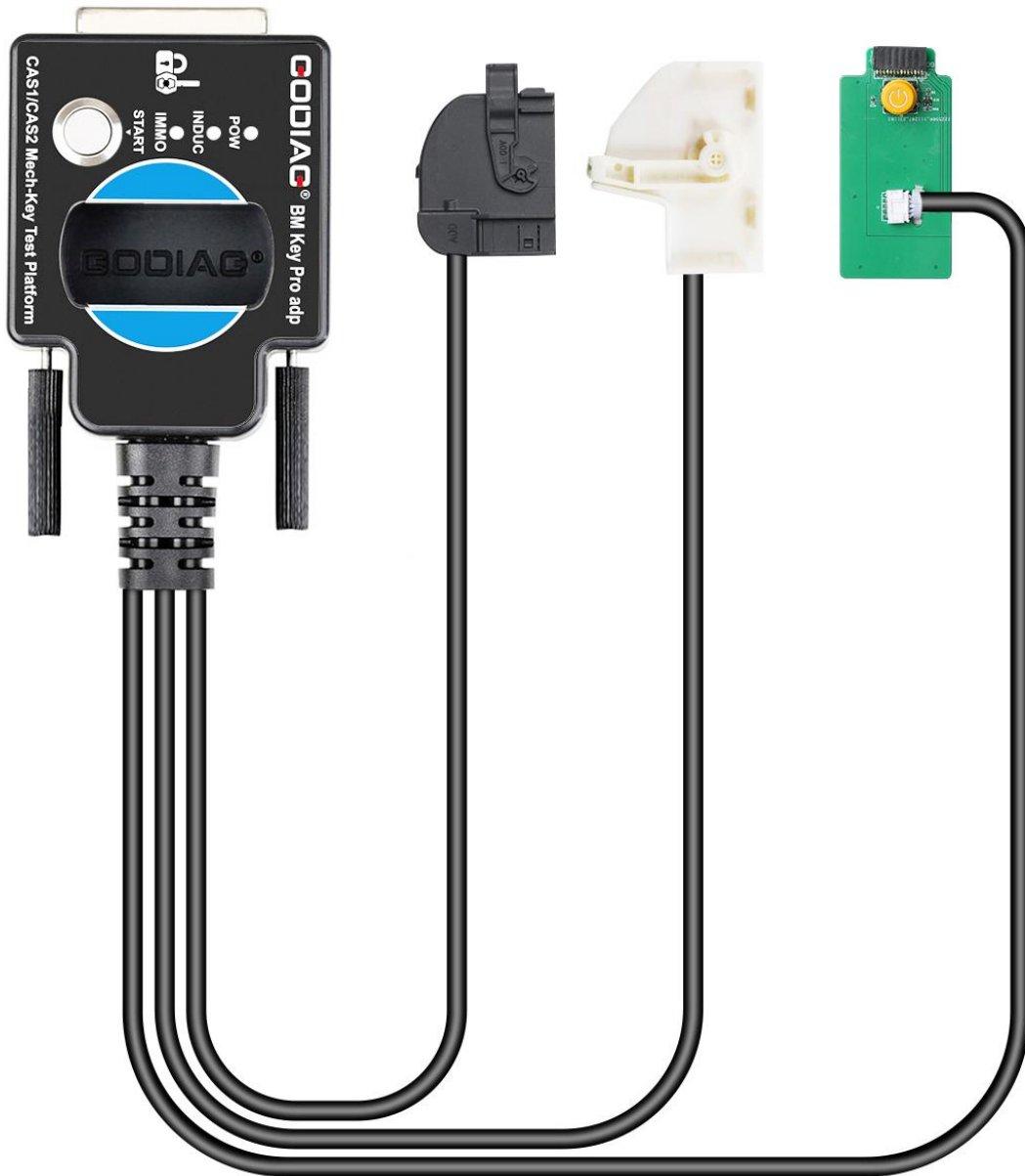


GODIAC BMW CAS1/CAS2 Mech-Key Test Platform



User Manual

2024 V1.1

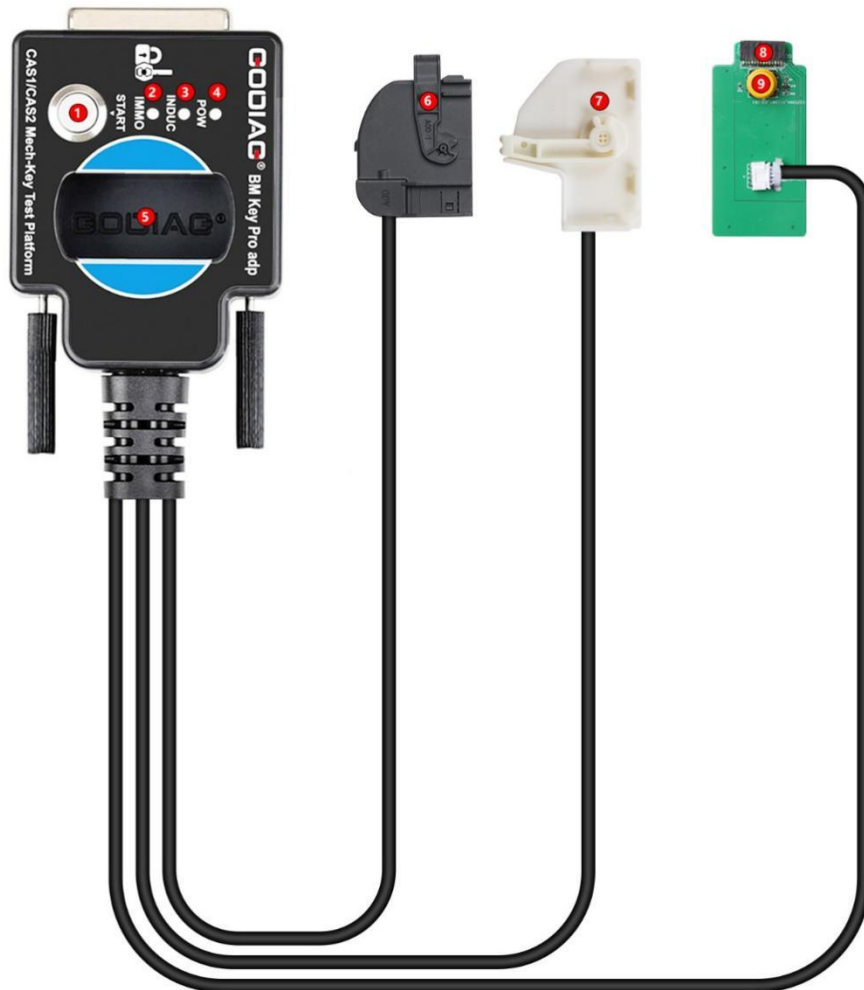
Product overview

GODIAG BMW CAS1/CAS2 Mech-Key Test Platform is a dedicated device developed for BMW locksmiths, maintenance engineers and CAS1 / CAS2 programming engineers. Please note that this product is only suitable for mechanical keys and does not support the semi-intelligent smart key CAS2. If necessary, please purchase a semi-intelligent smart key detection platform.



1. Check if the CAS1/CAS2 module and mechanical keys are synchronized.
2. Cooperate with the key programming devices like xhorse vvd2 / bmw vvd2 bim tool / Autel im608 / CGDI BMW etc. to perform all key lost matching or key addition operations.
3. CAS1/CAS2 module diagnostics
4. CAS1 / CAS2 module programming

Product Structure

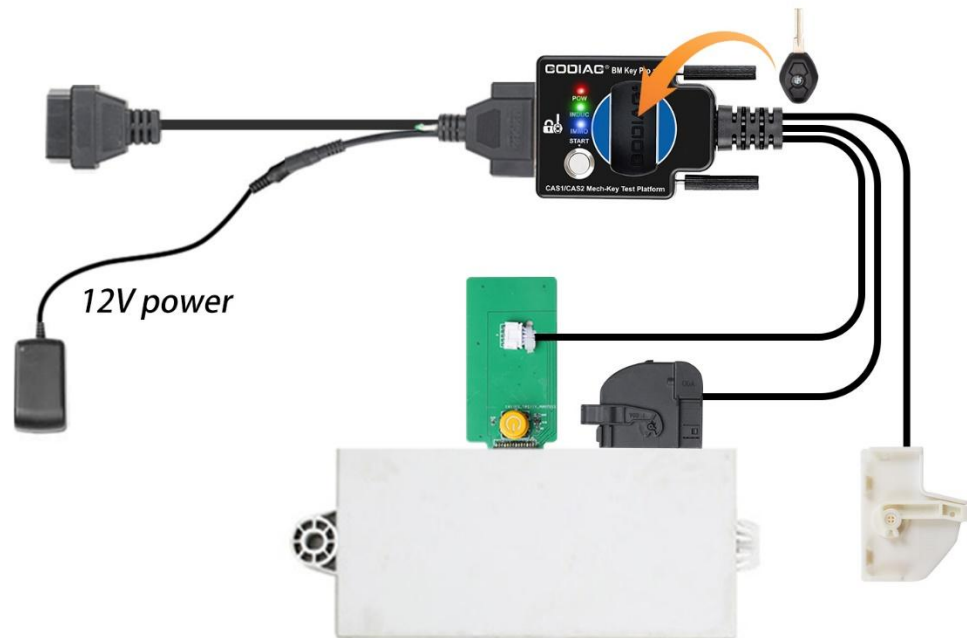


- (1) Check the start switch.
- (2) IMMO synchronization detection indicator light.
- (3) CAS module key induction coil indicator light.
- (4) Power indicator light.
- (5) Key identification port.
- (6) CAS2 module 41PIN connector.
- (7) CAS1 module 54PIN connector.
- (8) CAS2 module 14PIN connector
- (9) Start/stop button

Functions:

A. Synchronous detection of module and key:

Check whether the CAS2 module and mechanical key can be synchronized:



Step 1: Connect the CAS2 module according to the connection diagram

Step 2: Put the key into the key sensing area

Step 3: Connect the power supply.

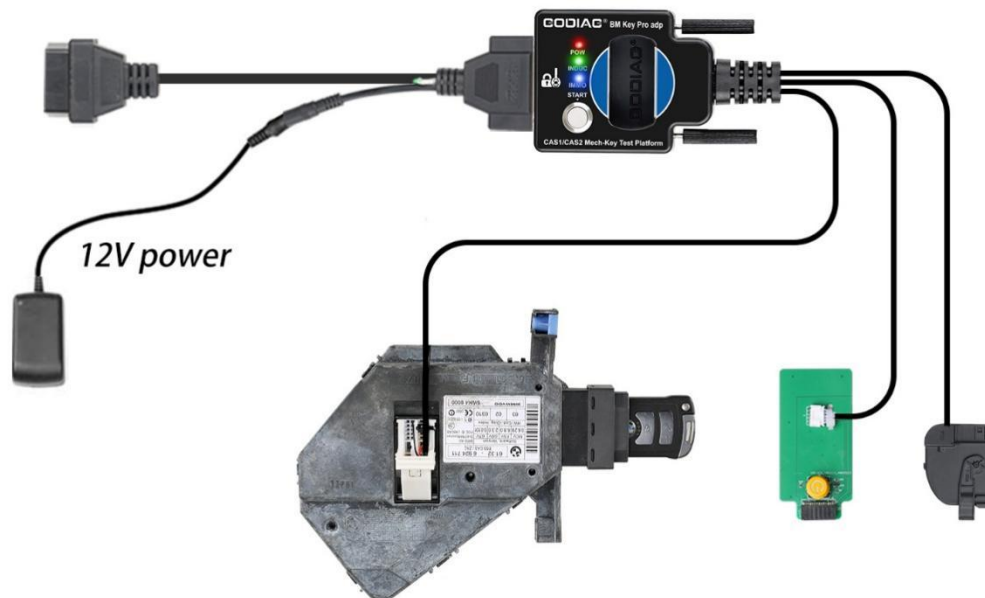
Step 4: Press the start switch (press the start switch once to turn on the CAS power and automatically detect whether the key and CAS are synchronized, press it again to turn off the CAS power and turn off the detection).

Synchronization judgment method: when the detection start switch is pressed, the Power indicator light will light up. If the key is synchronized with CAS2, the CAS module key induction coil indicator light will flash regularly. If it is an unsynchronized key, the key induction coil indicator light will only flash quickly for 2 seconds. [If the key is synchronized with the CAS module, the IMMO synchronization detection indicator light will light up and the internal buzzer of the machine will sound. If the key is not synchronized with the CAS module, the IMMO synchronization detection indicator light will not light up and the internal buzzer of the machine will not sound.]

Step 5: Press and hold the analog start/stop button, the IMMO synchronization detection indicator light will go out after 3 seconds. The INDUC sensor indicator light also goes out.

After releasing, the IMMO synchronization detection indicator light will light up. The INDUC sensor indicator light flashes.

CAS1 module and key synchronization detection:



1. Connect the device according to the connection diagram. Please use 12V 2.5A for power supply, otherwise the CAS1 module cannot be driven. [Do not connect the CAS2 module]
2. Press the start switch [you can see the START-STOP indicator light on the CAS lights up]
3. Insert the key into CAS1
4. Press the CAS1 key. If the key is synchronized with the CAS1 module, the CAS1 key will be locked. It will automatically exits if the key is not synchronized.

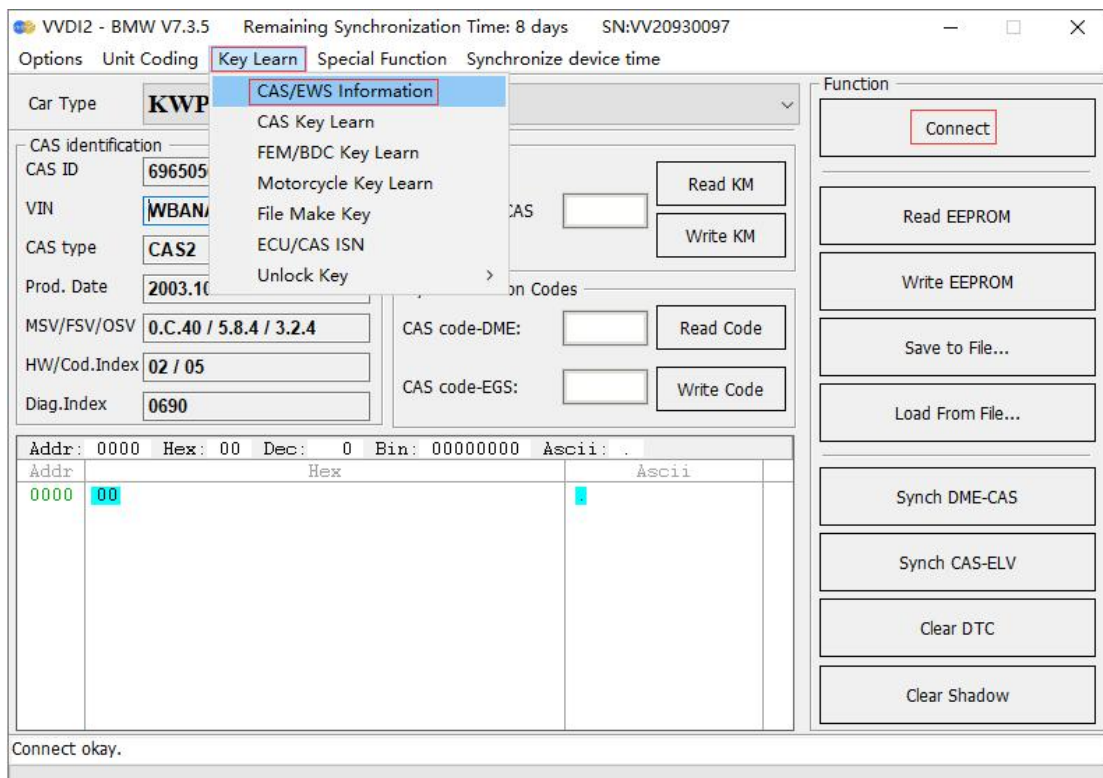
CAS2 mechanical key module key programming and module programming identification diagnostic connection demonstration:

The following uses Xhorse vvd2 device to perform BMW CAS2 mechanical key programming and matching operations:

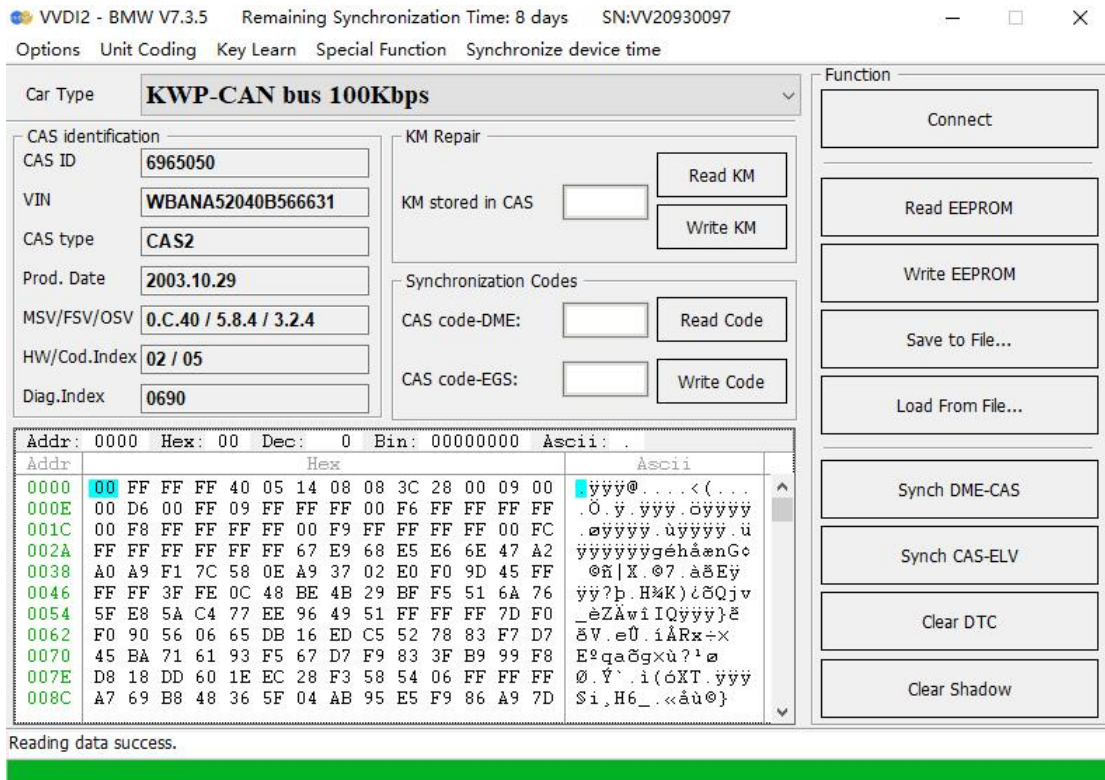
1. Connect the CAS2 mechanical key module and key programming diagnostic equipment according to the connection diagram. Press the start button to provide power to CAS2.



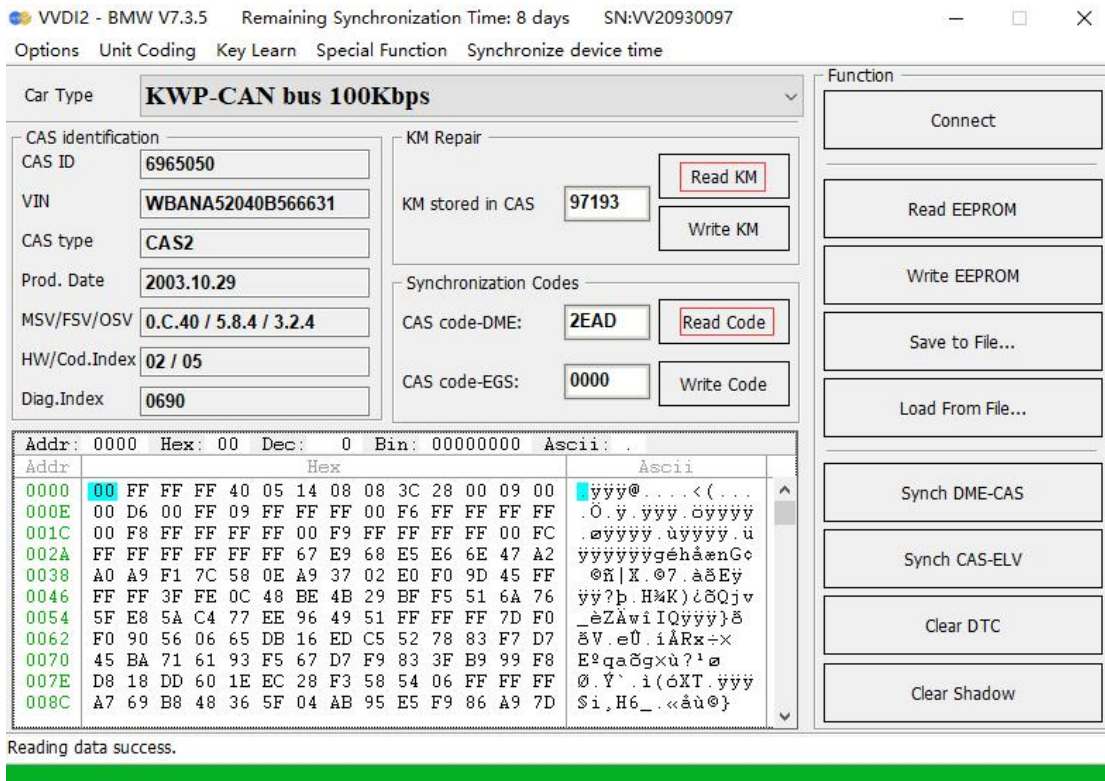
2. Select “key learn—CAS/EWS Information---Connect-- Read EEPROM”. [Note: Take away the key and do not perform synchronization detection between the key and the CAS2 module before connecting to read data. Just press the start button to power the CAS module. If the CAS module detects a synchronized key, then the connected device cannot read the data.]



Save to File...



If you want to read the CAS mileage or modify the CAS mileage, please operate the corresponding menu“Read KM”. It can also read CAS code-DME.



3. Key programming steps: select “key learn—CAS Key Learn ---Connect” , select “Get Key Info” and “Save Key Info”.

VVDI2 - BMW V7.3.5 Remaining Synchronization Time: 8 days SN:VV20930097

Options Unit Coding **Key Learn** Special Function Synchronize device time

Car Type **CAS** CAS/EWS Information type: **CAS2**

General info
 CAS ID:
 Key cutting code:
 CAS remote control fre
 Current key in ignition

Function

Connect

Get Key Info

Write Key Info

Save Key Info Load Key Info

Erase/Edit Key Info View all key information in detail

Prepare dealer key with programmer

Prepare dealer key with ignition switch

Add Key Repair Keyless Key

Enable Key Disable Key

Key Information

Position	Key ID	Status	Type	Info	Low	High	CFG	PS
Key 1	BD6ACD14	Enable	PCF 7936 transp	002B00	5B38B1AA	49B9	CE	B8:
Key 2	00CDAB17	Enable	PCF 7936 transp	00A100	A1162D42	D153	C8	1A:
Key 3	72199B19	Enable	PCF 7936 transp	002100	A1DDE3C3	C4C0	C8	60:
Key 4	FFFFFFFF	Disable	Unknown	017608	90F12579	7AD4	C8	D2:
Key 5	FFFFFFFF	Disable	Unknown	017608	713E486F	E1E9	C8	A8:
Key 6	FFFFFFFF	Disable	Unknown	017608	14C3E501	5257	C8	1F:
Key 7	FFFFFFFF	Disable	Unknown	017608	89323455	1E56	C8	30:
Key 8	FFFFFFFF	Disable	Unknown	017608	775FB336	6C97	C8	B4:
Key 9	FFFFFFFF	Disable	Unknown	017608	745194F6	1CED	C8	8C:
Key 10	FFFFFFFF	Disable	Unknown	017608	CB2F257B	BF5D	C8	11:

Reading data success.

4. Select an unused key position, be sure to select the “prepare dealer key with programmer” menu, and use the VVDI2 key programmer to generate the key. If the key is placed in the key sensing area of the GODIAG BMW CAS1/CAS2 Mech-Key Test Platform, the dealer key will not be generated.



VVDI2 - BMW V7.3.5 Remaining Synchronization Time: 8 days SN:VV20930097

Options Unit Coding Key Learn Special Function Synchronize device time

Car Type: **CAS - CAN bus 100Kbps**

General info

CAS ID: **6965050** CAS type: **CAS2**

Key cutting code: **HA00015263**

CAS remote control frequency: **315Mhz**

Current key in ignition switch is: **Key 3**

Key Information

Position	Key ID	Status	Type	Info	Low	High	CFG	PS
Key 1	BD6ACD14	Enable	PCF 7936 transp	002B00	5B38B1AA	49B9	CE	B8:
Key 2	00CDAB17	Enable	PCF 7936 transp	00A100	A1162D42	D153	C8	1A:
Key 3	72199B19	Enable	PCF 7936 transp	002100	A1DDE3C3	C4C0	C8	60:
Key 4	FFFFFFFF	Disable	Unknown	017608	90F12579	7AD4	C8	D2:
Key 5	FFFFFFFF	Disable	Unknown	017608	713E486F	E1E9	C8	A8:
Key 6	FFFFFFFF	Disable	Unknown	017608	14C3E501	5257	C8	1F:
Key 7	FFFFFFFF	Disable	Unknown	017608	89323455	1E56	C8	30:
Key 8	FFFFFFFF	Disable	Unknown	017608	775FB336	6C97	C8	B4:
Key 9	FFFFFFFF	Disable	Unknown	017608	745194F6	1CED	C8	8C:
Key 10	FFFFFFFF	Disable	Unknown	017608	CB2F257B	BF5D	C8	11:

Function

Connect

Get Key Info

Write Key Info

Save Key Info Load Key Info

Erase/Edit Key Info View all key information in detail

Prepare dealer key with programmer

Prepare dealer key with ignition switch

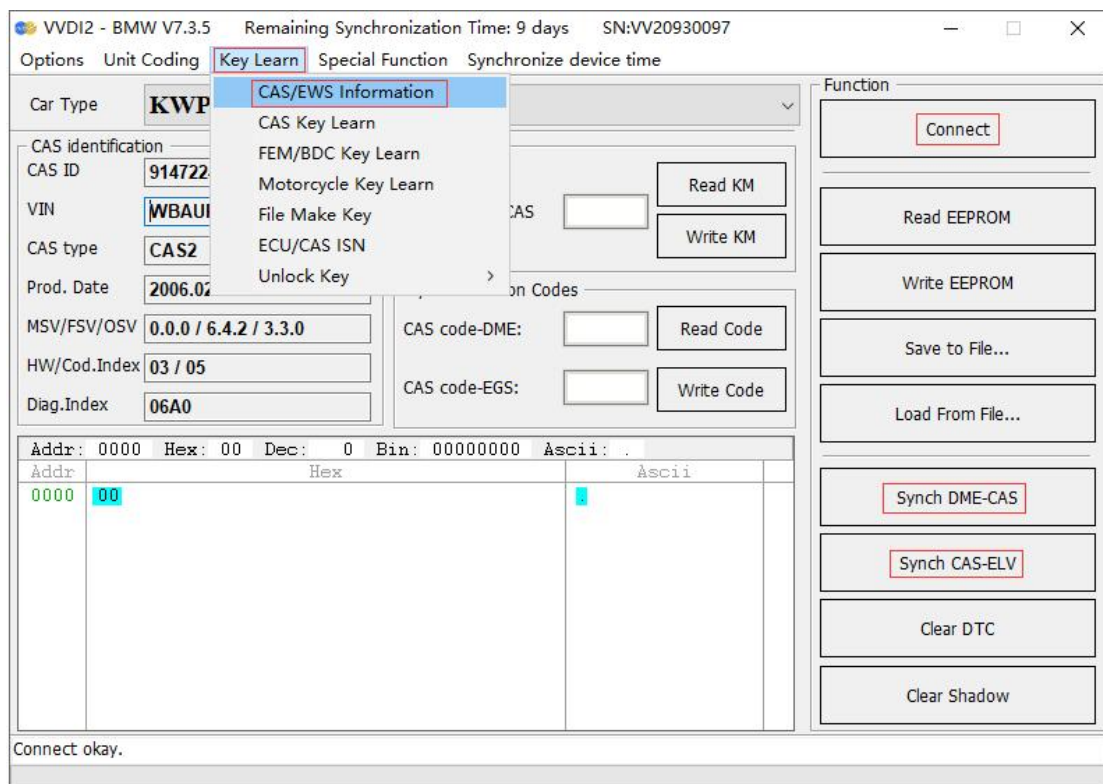
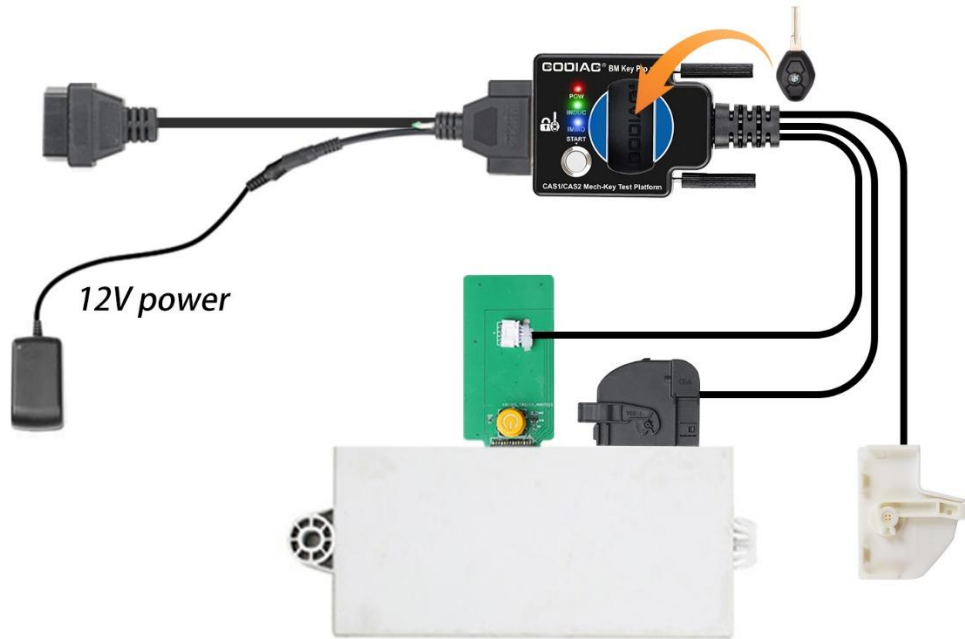
Add Key Repair Keyless Key

Enable Key Disable Key

Can not Read Write ChipSet. Check it!

5. After programming the dealer key, place the key into the Godiag BMW CAS1/CAS2 Mech-Key Test Platform sensor port for testing. For test steps, please refer to module and key synchronization detection.

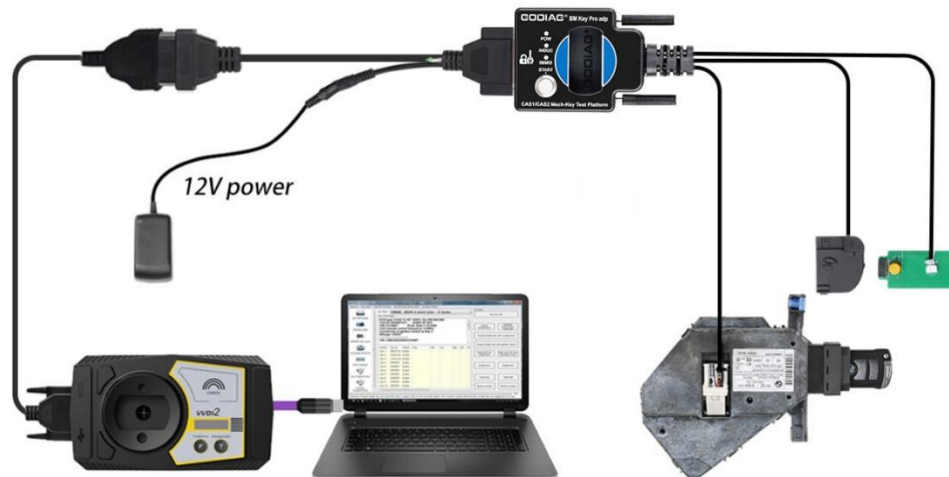
If the new key detection is out of sync, please synchronize CAS and DME or synchronize CAS and ELV. Reconnect the device and module and press the button 'Check the start switch' If the IMMO light cannot light up, enter the VVDI2 menu "Key Learn—CAS/EWS Information — Connect — Synch DME-CAS or Synch CAS-ELV" for synchronization operation. [When performing synchronization, the key must be placed in the key sensing programming area of the VVDI2 device.]



The following uses the Xhorse vvdI2 device to perform the BMW CAS1 key programming and matching operation:

1. Connect the CAS1 module and the key programming diagnostic device according to the connection diagram. Press the START switch on the Godiag BMW CAS1/CAS2

Mech-Key Test Platform and the POW indicator light will light up, indicating that the test platform has output power. The indicator light on the CAS1 mode will also light up. [Please use 12V 2.5A power supply, otherwise it will not be able to drive the CAS1 module]



2. Select “key learn—CAS/EWS Information---Connect-- Read EEPROM”. [Be careful not to insert the key. If the data cannot be read, please reconnect and turn on the platform power.] **[Note:** Do not perform a synchronization test between the key and the CAS1 module, otherwise the connection or data reading will not be possible. If a synchronization test is performed, please disconnect the power supply and reconnect the device and CAS module.]

VVDI2 - BMW V7.3.5 Remaining Synchronization Time: 8 days SN:VV20930097

Options Unit Coding **Key Learn** Special Function Synchronize device time

Car Type **KWP** CAS/EWS Information

CAS identification
CAS ID **694248**
VIN **WBAG**
CAS type **CAS1**
Prod. Date **2002.05**

MSV/FSV/OSV **0.A.D8 / 6.C.8 / 2.3.0**
HW/Cod.Index **03 / 03**
Diag.Index **0310**

CAS **271905** Read KM Write KM

CAS code-DME: **3926** Read Code
CAS code-EGS: **0000** Write Code

Function
Connect
Read EEPROM
Write EEPROM
Save to File...
Load From File...
Synch DME-CAS
Synch CAS-ELV
Clear DTC
Clear Shadow

Addr	0000	Hex	00	Dec	0	Bin	00000000	Ascii	
Addr	Hex							Ascii	
0000	00	55	44	03	14	08	08	78 28 00 02 00 00 0D	UD...x(.....
000E	00	F5	00	FC	00	EB	00	ED 00 F1 FF FC FF FF	.š.ü.ë.i.ňyüýý
001C	FF	54	A2	D4	C8	84	10	72 67 3E 20 61 90 EB	ÿTcÖE.rg> aë
002A	D1	2C	68	59	99	23	D8	8B D1 F3 21 AE AE 94	Ň.hY#ŇŇó!@
0038	AB	2F	13	9C	37	8D	63	B9 3A DD B2 80 8B	<</ 7c6¹:Ÿ²
0046	48	DF	88	7C	AA	44	29	79 A5 F3 A9 F0 E4 83	Hß ªD)y#óöšä
0054	05	B4	22	60	C4	01	E2	7F 45 4E 25 FA 01 5C	."Á.á EN%ú.\
0062	D7	17	27	9B	73	41	DC	B9 38 35 EE 87 86 DC	x.'sAU¹85iÜ
0070	DE	91	69	9B	2F	96	BF	FA 81 D8 FA 48 5F 5A	pi/úúúH_Z
007E	18	A0	AA	A3	57	D9	AA	E6 A5 F3 6E 8D AA	.ªšWÜªª#ónª
008C	1F	3F	D8	9E	D7	2D	86	DC AB 6C 3E 38 DE 91	.?@x-Ü«l>8p

Reading data success.

Save to File...

VVDI2 - BMW V7.3.5 Remaining Synchronization Time: 8 days SN:VV20930097

Options Unit Coding Key Learn Special Function Synchronize device time

Car Type **KWP-CAN bus 100Kbps**

CAS identification
CAS ID **6942487**
VIN **WBAGN41070DM76015**
CAS type **CAS1**
Prod. Date **2002.05.07**

MSV/FSV/OSV **0.A.D8 / 6.C.8 / 2.3.0**
HW/Cod.Index **03 / 03**
Diag.Index **0310**

KM Repair
KM stored in CAS **271905** Read KM Write KM

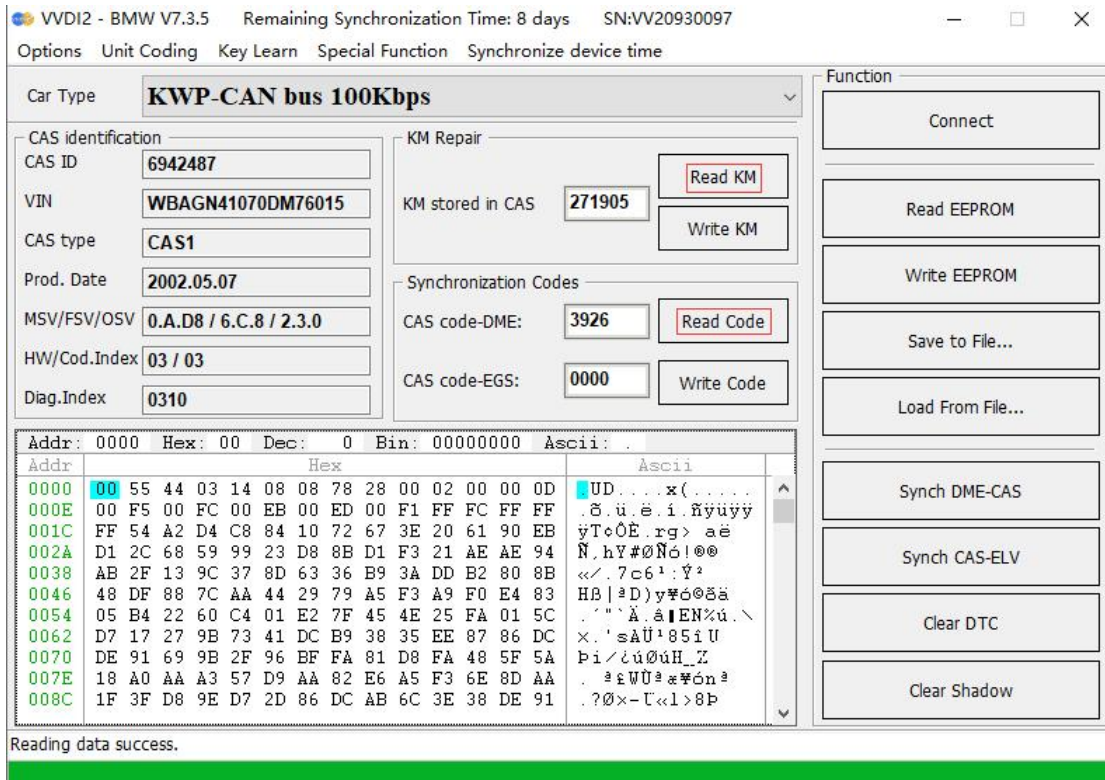
Synchronization Codes
CAS code-DME: **3926** Read Code
CAS code-EGS: **0000** Write Code

Function
Connect
Read EEPROM
Write EEPROM
Save to File...
Load From File...
Synch DME-CAS
Synch CAS-ELV
Clear DTC
Clear Shadow

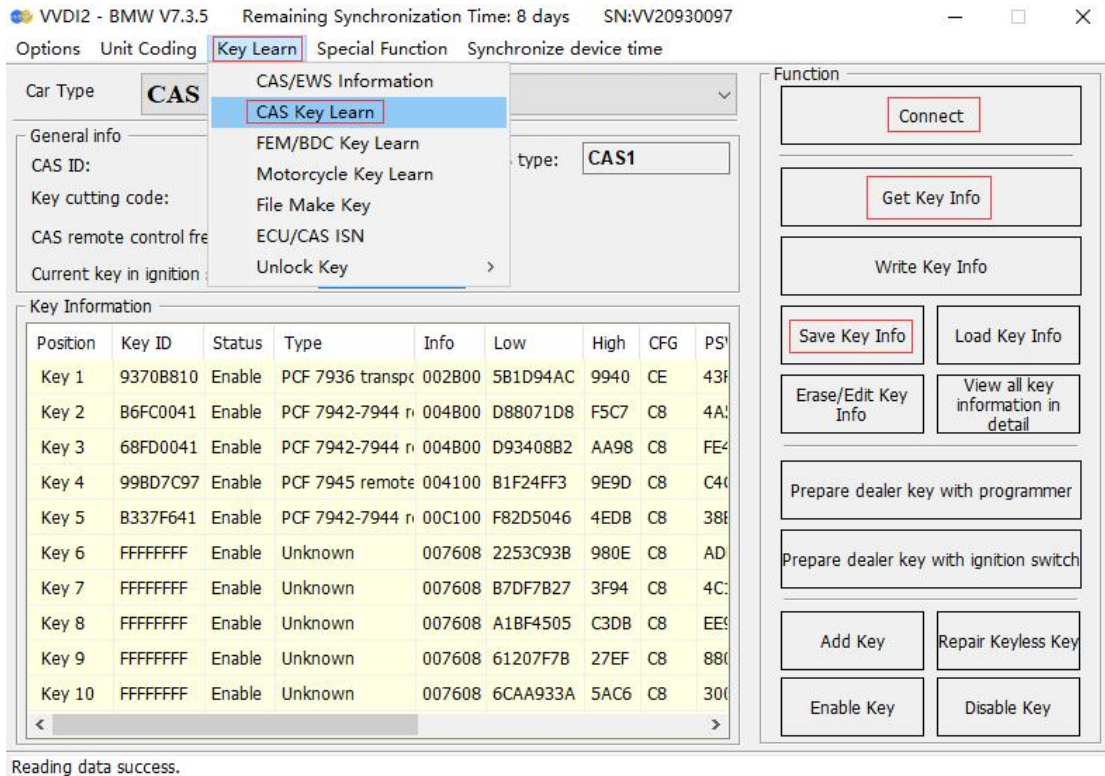
Addr	0000	Hex	00	Dec	0	Bin	00000000	Ascii	
Addr	Hex							Ascii	
0000	00	55	44	03	14	08	08	78 28 00 02 00 00 0D	UD...x(.....
000E	00	F5	00	FC	00	EB	00	ED 00 F1 FF FC FF FF	.š.ü.ë.i.ňyüýý
001C	FF	54	A2	D4	C8	84	10	72 67 3E 20 61 90 EB	ÿTcÖE.rg> aë
002A	D1	2C	68	59	99	23	D8	8B D1 F3 21 AE AE 94	Ň.hY#ŇŇó!@
0038	AB	2F	13	9C	37	8D	63	B9 3A DD B2 80 8B	<</ 7c6¹:Ÿ²
0046	48	DF	88	7C	AA	44	29	79 A5 F3 A9 F0 E4 83	Hß ªD)y#óöšä
0054	05	B4	22	60	C4	01	E2	7F 45 4E 25 FA 01 5C	."Á.á EN%ú.\
0062	D7	17	27	9B	73	41	DC	B9 38 35 EE 87 86 DC	x.'sAU¹85iÜ
0070	DE	91	69	9B	2F	96	BF	FA 81 D8 FA 48 5F 5A	pi/úúúH_Z
007E	18	A0	AA	A3	57	D9	AA	E6 A5 F3 6E 8D AA	.ªšWÜªª#ónª
008C	1F	3F	D8	9E	D7	2D	86	DC AB 6C 3E 38 DE 91	.?@x-Ü«l>8p

Reading data success.

If you want to read the CAS mileage or modify the CAS mileage, please operate the corresponding menu "Read KM". It can also read CAS code-DME.



3. Key programming steps: select “key learn—CAS Key Learn----Connect”. Select “Get Key Info” and “Save Key Info”.



4. Select an unused key position, be sure to select the “prepare dealer key with programmer” menu, and use the VVDI2 key programmer to generate the key. [Because the CAS1 module key identification socket or GODIAG BMW CAS1/CAS2 Mech-Key Test

Platform key sensor cannot generate dealer keys.]



VVDI2 - BMW V7.3.5 Remaining Synchronization Time: 8 days SN:VV20930097

Options Unit Coding Key Learn Special Function Synchronize device time

Car Type **CAS - CAN bus 100Kbps**

General info

CAS ID: **6942487** CAS type: **CAS1**

Key cutting code: **HA00033746**

CAS remote control frequency: **868Mhz**

Current key in ignition switch is: **Key 5**

Key Information

Position	Key ID	Status	Type	Info	Low	High	CFG	PS
Key 1	9370B810	Enable	PCF 7936 transp	002B00	5B1D94AC	9940	CE	43F
Key 2	B6FC0041	Enable	PCF 7942-7944 r	004B00	D88071D8	F5C7	C8	4A:
Key 3	68FD0041	Enable	PCF 7942-7944 r	004B00	D93408B2	AA98	C8	FE4
Key 4	99BD7C97	Enable	PCF 7945 remote	004100	B1F24FF3	9E9D	C8	C40
Key 5	B337F641	Enable	PCF 7942-7944 r	00C100	F82D5046	4EDB	C8	38E
Key 6	FFFFFFFF	Enable	Unknown	007608	2253C93B	980E	C8	AD
Key 7	FFFFFFFF	Enable	Unknown	007608	B7DF7B27	3F94	C8	4C:
Key 8	FFFFFFFF	Enable	Unknown	007608	A1BF4505	C3DB	C8	EE9
Key 9	FFFFFFFF	Enable	Unknown	007608	61207F7B	27EF	C8	880
Key 10	FFFFFFFF	Enable	Unknown	007608	6CAA933A	5AC6	C8	300

Function

Connect

Get Key Info

Write Key Info

Save Key Info Load Key Info

Erase/Edit Key Info View all key information in detail

Prepare dealer key with programmer

Prepare dealer key with ignition switch

Add Key Repair Keyless Key

Enable Key Disable Key

Reading data success.

5. After the dealer key is successfully programmed, place the key into the CAS1 module key module socket for testing. For test steps, please refer to the CAS1 module and key synchronization detection steps.

If the IMMO light cannot light up, enter the VVDI2 menu “Key Learn—CAS/EWS Information—Connect—Synch DME-CAS or Synch CAS-ELV” for synchronization. [When performing synchronization, the key must be placed in the VVDI2 device key sensing area.]

VVDI2 - BMW V7.3.5 Remaining Synchronization Time: 8 days SN:VV20930097

Options Unit Coding Key Learn Special Function Synchronize device time

Car Type: **KWP-CAN bus 100Kbps**

Function: Connect, Read EEPROM, Write EEPROM, Save to File..., Load From File..., Synch DME-CAS, Synch CAS-ELV, Clear DTC, Clear Shadow

CAS Identification: CAS ID: 6942487, VIN: WBAGN41070DM76015, CAS type: CAS1, Prod. Date: 2002.05.07, MSV/FSV/OSV: 0.A.D8 / 6.C.8 / 2.3.0, HW/Cod.Index: 03 / 03, Diag.Index: 0310

KM Repair: Read KM, Write KM

Synchronization Codes: Read Code, Write Code

Addr	Hex	Dec	Bin	Ascii											
0000	00	55	44	03	14	08	08	78	28	00	02	00	00	0D	UD...x(.....
000E	00	F5	00	FC	00	EB	00	ED	00	F1	FF	FC	FF	FF	.ö.ü.ë.i.ñüÿÿ
001C	FF	54	A2	D4	C8	84	10	72	67	3E	20	61	90	EB	ÿTcÖË.rg> aë
002A	D1	2C	68	59	99	23	D8	8B	D1	F3	21	AE	AE	94	Ñ,hY#0Ñó!@@
0038	AB	2F	13	9C	37	8D	63	36	B9	3A	DD	B2	80	8B	<<.7c6¹:ÿ?
0046	48	DF	88	7C	AA	44	29	79	A5	F3	A9	F0	E4	83	Hß ²D)y#ó@öä
0054	05	B4	22	60	C4	01	E2	7F	45	4E	25	FA	01	5C	."Ä.á EN%ú.\
0062	D7	17	27	9B	73	41	DC	B9	38	35	EE	87	86	DC	x.'sÄÜ¹85iÜ
0070	DE	91	69	9B	2F	96	BF	FA	81	D8	FA	48	5F	5A	bi/úúúh_Z
007E	18	A0	AA	A3	57	D9	AA	82	E6	A5	F3	6E	8D	AA	.²iWÜ³e#ón³
008C	1F	3F	D8	9E	D7	2D	86	DC	AB	6C	3E	38	DE	91	.?Øx-Ü<<1>8þ

Reading data success.



Shenzhen Sinoy Technology Co.,Ltd

All Rights Reserved

www.godiag.com

+86 18813687743

Sales@GoDiag.com



UK
CA

CE

FC



Thanks for reading!