



### List of rechargeable battery of XC-Mini

- ① Mainboard
- ② Cable of 6 & 7
- ③ Battery charger & display module
- ④ Vehicle charging line
- ⑤ Adaptor 220V

Specification of rechargeable battery of XC-Mini	
Standard voltage	25. 9V
Limited charge voltage	29. 4V
Rated Capacity	2500mAh
Power Ra	73. 5Wh

## Instruction of how to change the built-in battery of XC-MINI

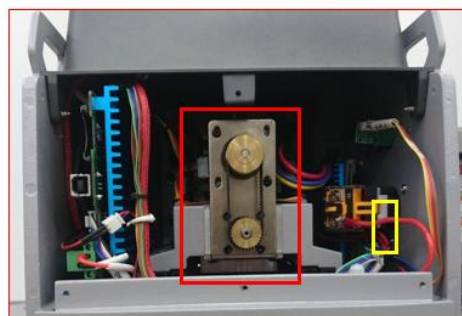


Remark: please follow the procedure to operation in case of damage the Mainboard ,do not connect the power during operation

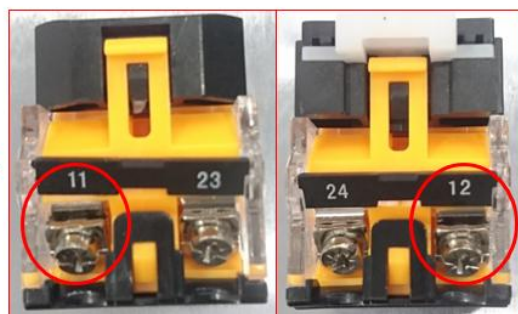
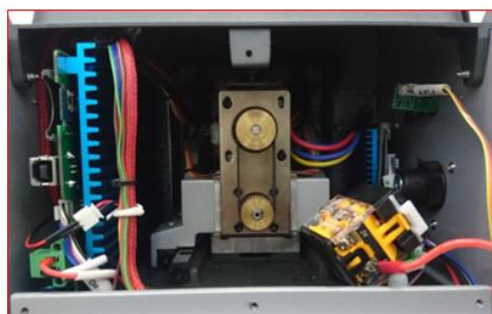
Attention : For your security, do not connect the power in next steps



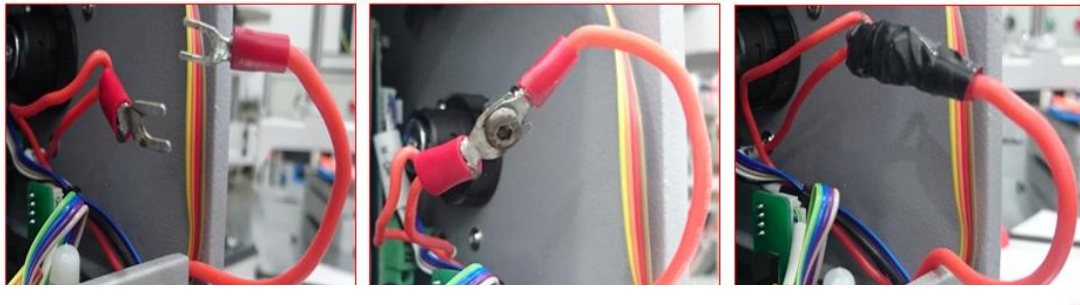
1 , Take off those 4 screws like the picture show



2 , Push the motor inside and hold the white buckle then take out the emergency-stop module like the picture show



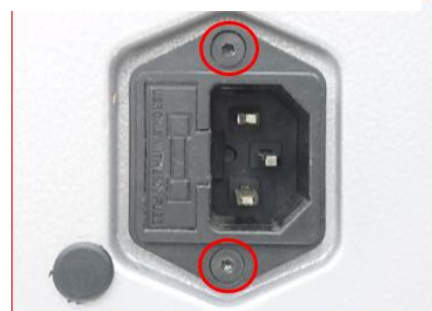
3 , Loose the connection of position 11 &12 like picture show



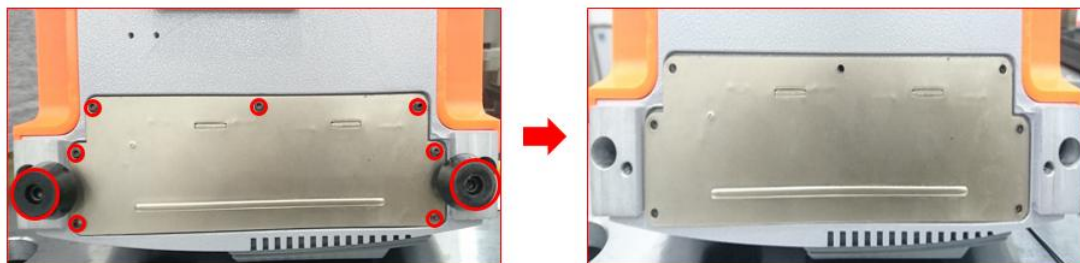
4 , Use a screw to make the connection those two cables what are from position 11 & 12 like the picture show ,and use the acetate tape fix the connection well



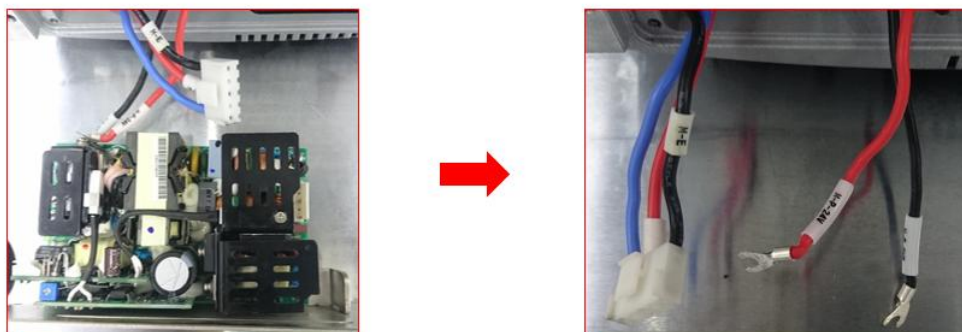
5, Fix the cable 6 to the position 12 , cable 7 for position 11 , then put the emergency – stop module back and fix it well



6, Take off those 2 screws like picture show

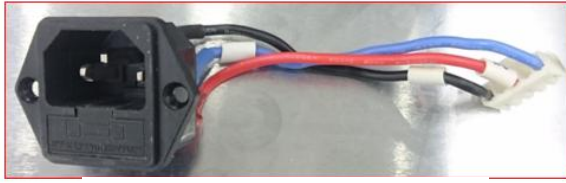


7, Turn over the XC-MINI and take off the foot rubber and



8, Take out the Power-board and disconnect all cables like picture show

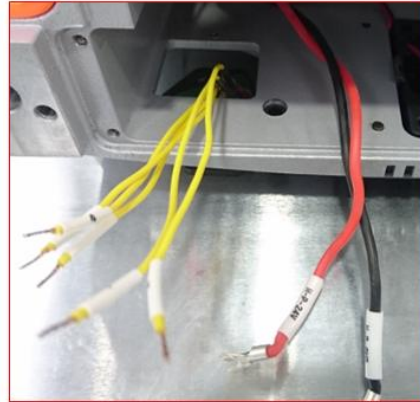




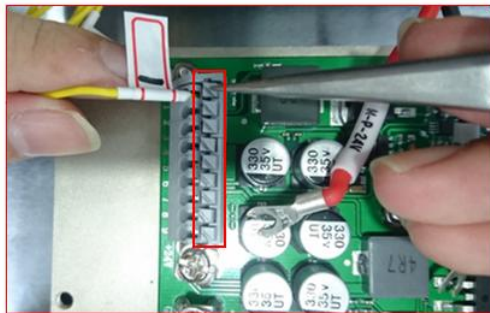
Original Power interface ( 220V)



Battery charger & display module



9, Use the battery charger & display module to replace the original power interface like picture show



10 , Fix the cable into the socket according the number between the cable and socket ,make sure every cable will be fix well ,



11, Fix the cable of 24V and cable of GND in the right position like picture show



12, Connection the power like picture show then put back the Mainboard and fix it well



13, Fix the all cables after put back the mainboard , the mainboard should be in fixed very solid ,manage the cables again if not , then fix the foot rubber and screws



14, Fix those screws like picture show



15 , The screen , LED , display of battery charger should be on after you press the emergency – stop button , if not ,check the connection again

Remark : electricity volume will be show by the green light , the LED that is mark " CHRG " should be green if it is charged , it will be red during charging