

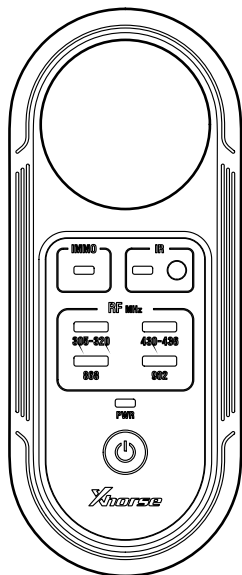
Xhorse®

REMOTE TESTER

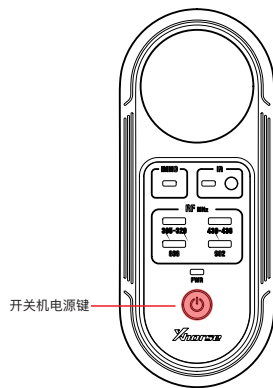
用户手册



扫一扫，下载
Xhorse APP



开关机及使用说明：



开机：短按开关机电源键。

关机：短按开关机电源键。

自动关机：为提高电池使用时间，开机后约30秒机器将自动关机。

机器参数规格表

输入电源	3V DC
待机电流	12mA
频率信号检测距离	约10cm(和钥匙信号强度有关)

*电池规格要求：2节7号电池。

面板指示说明：



①【电源键】：用于开机及关机；

②【PWR】指示灯：当测试仪处于开机状态时指示灯亮；

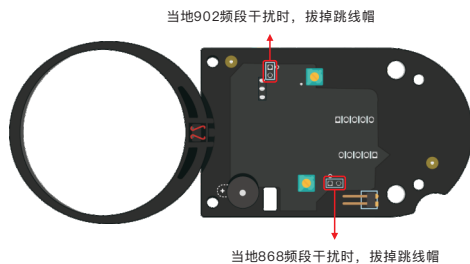
③【305-320】指示灯：频率信号指示灯，当信号频率范围在305MHz-320MHz内时指示灯亮；

④【430-436】指示灯：频率信号指示灯，当信号频率范围在430MHz-436MHz内时指示灯亮；

- ⑤【868】指示灯：频率信号指示灯，当信号频率为868MHz时指示灯亮；
- ⑥【902】指示灯：频率信号指示灯，当信号频率为902MHz时指示灯亮；
- ⑦【IMMO】指示灯：点火线圈信号指示灯，有信号时指示灯亮（例如附图一）；
- ⑧【IR】指示灯：当检测到红外信号时指示灯亮（例如附图二）；
- ⑨【红外信号接收头】：用于接收红外信号，检测时需要将奔驰钥匙垂直对准该接收头，检测到信号时指示灯亮；
- ⑩【电池盖】：可以推动电池盖来更换电池。

频段使用跳线帽说明：

注：机器开机后，如果868或者902灯一直闪烁或者常亮，说明当地存在频点干扰，请按下图方法，屏蔽868和902测频功能。



附图一：IMMO防盗信号测试



附图二：红外信号测试

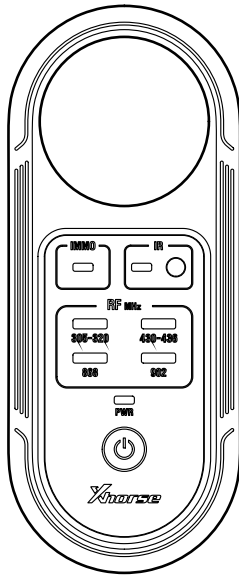


REMOTE TESTER

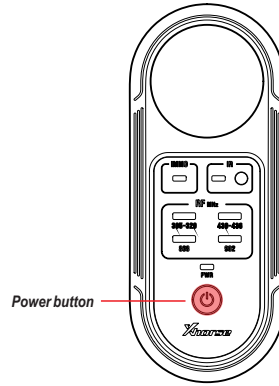
User Manual



Scan QR Code to download Xhorse APP



Power on/off and instructions for use:



Power on: Keep press the power button to turn on the device.
Power off: Keep, press the power button to turn off the device.
Automatic shutdown: In order to improve the battery service time, the device will automatically power off after about half a minute each time.

Device parameters and specifications

Input power	3V DC
Standby current	12mA
Frequency signal detection range	About 10cm(related to key signal strength)

*Battery specifications: 2# 7 batteries.

Panel instructions:



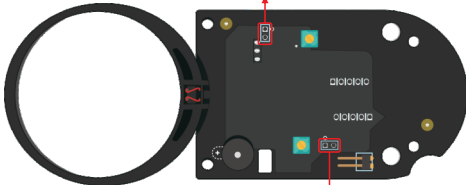
- ① [Power button] : used for power on and off.
- ② [PWR] Indicator light: when the tester is turned on, the indicator will turn on.
- ③ [305-320] Indicator light: frequency signal indicator light, which is on when the signal frequency range is within 305MHz-320MHz.
- ④ [430-436] Indicator light: frequency signal indicator light, which is on when the signal frequency range is within 430MHz-436MHz.

- ⑤ [868] Indicator light: frequency signal indicator light, which is on when the signal frequency is 868MHz.
- ⑥ [902] Indicator light: frequency signal indicator light, which is on when the signal frequency is 902MHz.
- ⑦ [IMMO] Indicator light: ignition coil signal indicator, which is on when there is a signal. (As show in Figure 1)
- ⑧ [IR] Indicator light: the indicator light is on when IR signal is detected. (As show in Figure 2)
- ⑨ [Infrared signal receiver] : it is used to receive infrared signals. During detection, the Mercedes Benz key needs to be vertically aimed at the receiver, and the indicator light will be on when the signal is detected.
- ⑩ [Battery cover] : the battery cover can be pushed to replace the battery.

Instructions for using the band jumper :

Note: After the device is turned on, if the 868 or 902 signal lights are flashing or on all the time, it means that there is local frequency interference. Please block the 868 and 902 frequency measurement functions according to the following figure.

When the 902 frequency band is disturbed, remove the jumper.



When the 868 frequency band is disturbed, remove the jumper.



Figure 1:IMMO signal test



Figure 2:Infrared signal test